



TRBOnet™ Watch: Monitoring and Analytics

Make the most of your radio network

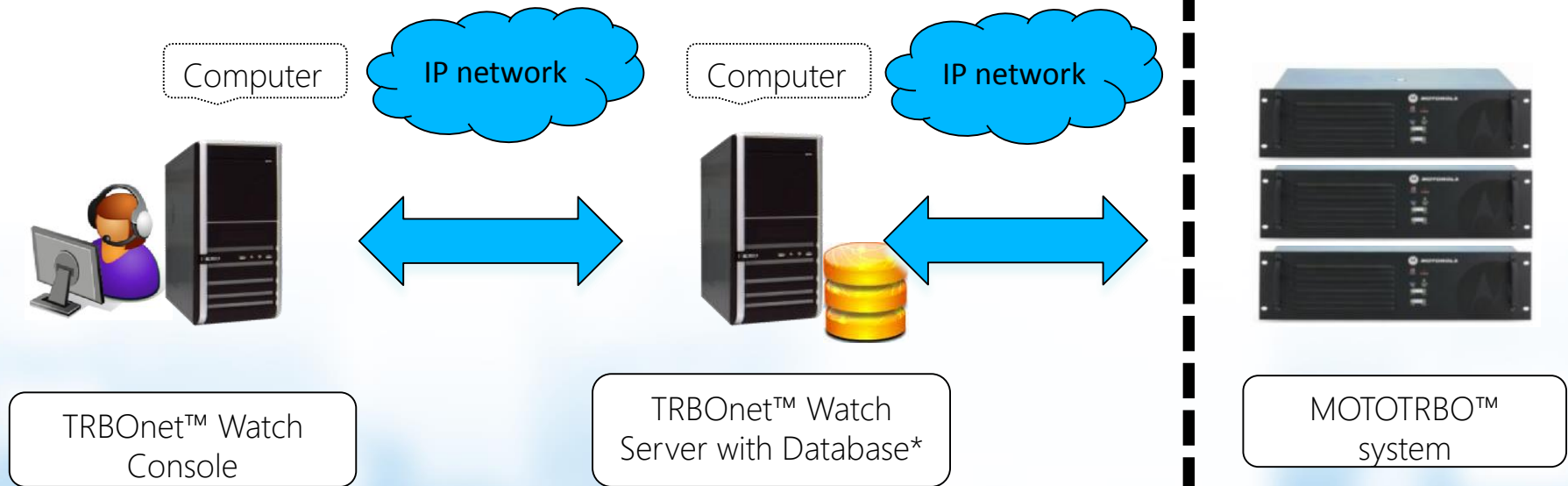


TRBOnet™ Watch

- MOTOTRBO™ protocol analyzer
- Support for all MOTOTRBO™ systems
- Multiple systems monitoring
- Topology problem detection
- Channel usage monitoring
- Hardware failure alarms
- Real-time capture
- Network statistics
- No NAI data required



TRBOnet™ Architecture: Client-Server Software



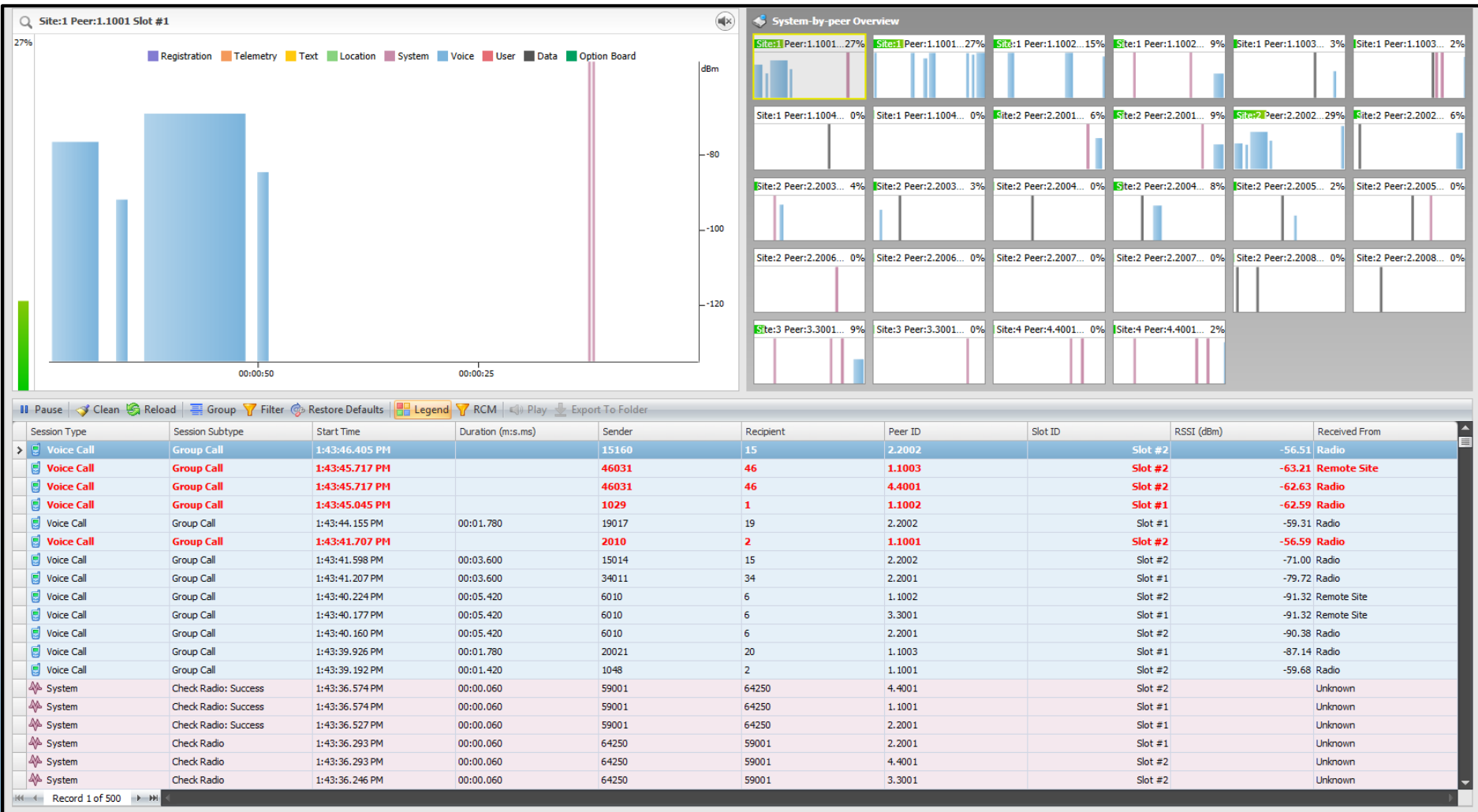
* Microsoft SQL Server Express (free edition)

Features: Real-Time Monitoring

- All traffic by slots
- Traffic information: voice, ARS, text, GPS etc.
- Traffic log with advanced filters
- Channel usage statistics
- Slot listening
- Signal strength



Real-Time Monitoring Interface

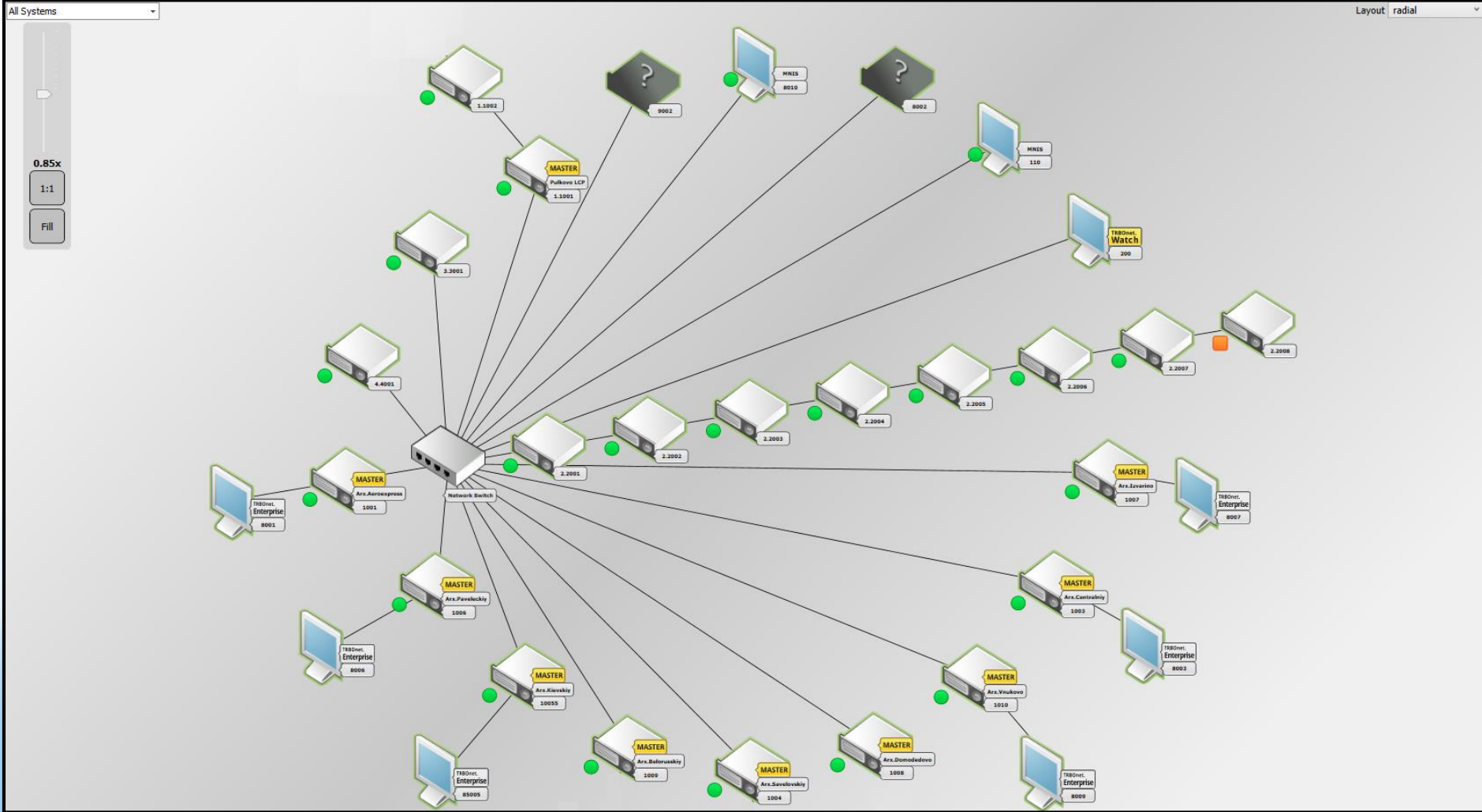


Features: Topology & Diagnostics

- Systems of any size and complexity
- LE ID for all components of the system
- Remote control: enable/disable, channel change
- Detailed information on network connections
- Repeater health status and alarms
- Failure point detection
- Repeater uptime
- On/off states
- Different display modes



Topology Interface



Features: Reports & Analysis

- Deep inspection: multiple reports, powerful filters
- Easy data visualization: bar, pie and line charts
- Output export to popular formats
- Channel usage: voice and data
- Bottleneck analysis
- Alarms and blackouts
- RSSI level map
- User activity
- Quick report filters

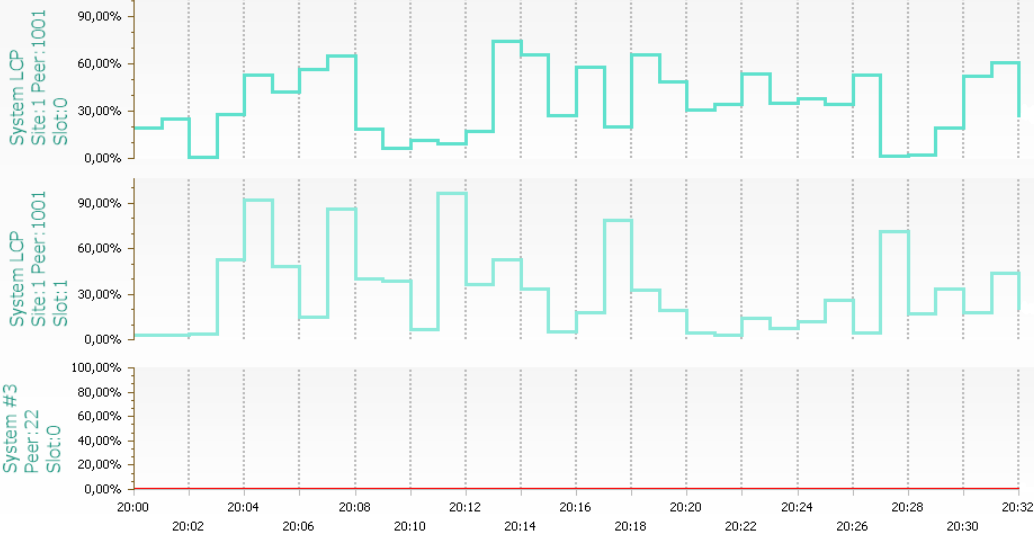
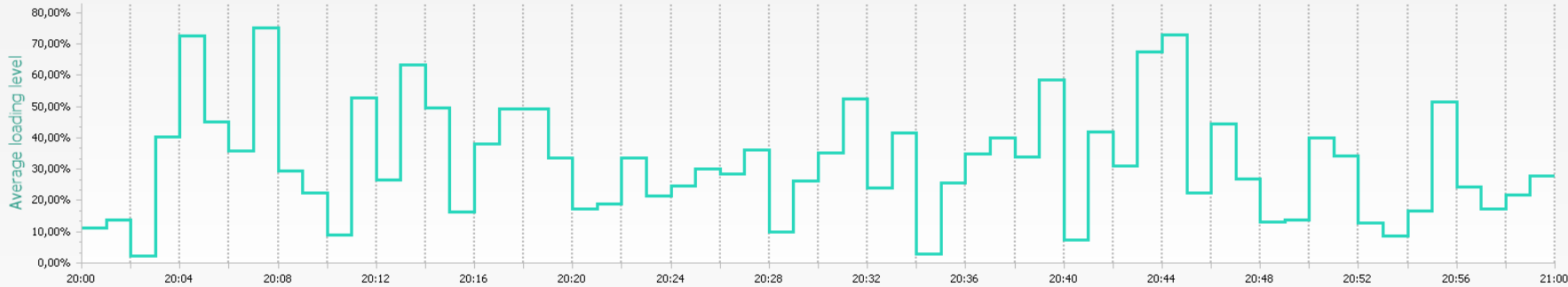


Reports: Network Usage

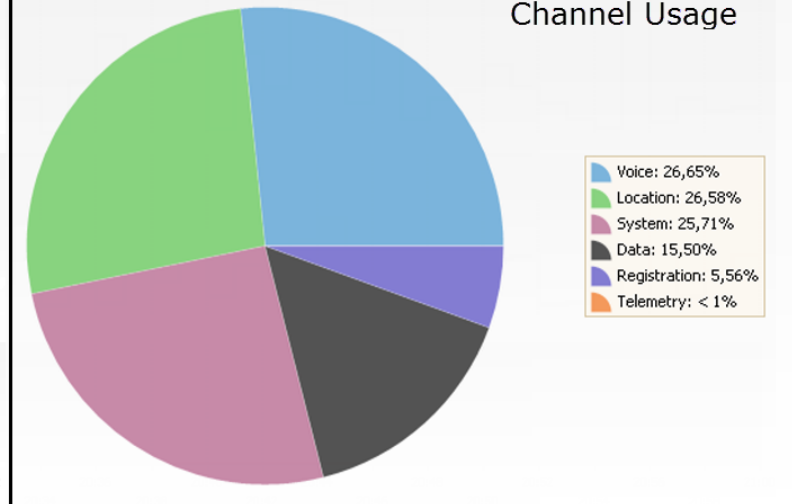
Multi-channel mode

Average and individual loading level indicators of the channels [Print](#) [Export](#) 11.03.2015 20:00:00 - 20:59:59 (Minute)

Load No repeater connection



Channel Usage



Reports: Coverage Map



SNMP Integration

- Trap notifications (RDAC alarms, system events etc.) for SNMP consoles
- Radio system configuration and trap log available via polling
- Support for SNMPv2 and SNMPv3



SNMP Interface

The screenshot shows the 'TRBOnet.Watch v2.2 Configuration' window. On the left is a navigation tree with categories: Configuration, Service, Database, Network, Advanced settings, MOTOTRBO, IPSC UHF NEW, Privacy, Data persistence, Peers, Connect PLUS, LCP, Capacity PLUS, Privacy, Data persistence, Peers, SNMP (highlighted), and License. The main area is titled 'SNMP' and contains the following sections:

- System Parameters:**
 - sysDescr: TRBOnet.Watch 2.0.0.191
 - sysObjectID: 1.3.6.1.4.1.19547.1.1
 - sysContact: http://trbonet.com/contacts.aspx?product=TRBOnet.Watch
 - sysName: TRBOnet.Watch SNMP Agent
 - sysLocation: Default location
- Engine ID:** 80000AD0431AF108
- SNMPv3 User:**
 - User: john.m
 - Auth Password: john.m
 - Privacy Password: john.m
 - Auth Protocol: Md5
 - Privacy Protocol: Des
- SNMP Agent:**
 - Enabled
 - SNMPv3 Only
- Notification:**
 - Send: SNMP (with Test Message button)
 - Authentication
 - To: 255.255.255.255
 - Version: SNMPv2

At the bottom of the window are buttons for 'Set Defaults', 'Apply', 'OK', and 'Cancel'.

Supported Systems

- Single Repeater and IPSC
- Capacity Plus
- Linked Capacity Plus
- Connect Plus (XRT is required)
- New Generation Repeater



Support

- Dedicated support team
- Guaranteed response time: two workdays
- Free updates and support first 12 months
- Low annual subscription costs

skype: trbonet

email: info@trbonet.com

http: www.trbonet.com





TRBOnet
Digital Technologies



**THANK
YOU!**



www.TRBO.net.com