

TRBOnet 5.1 New Features

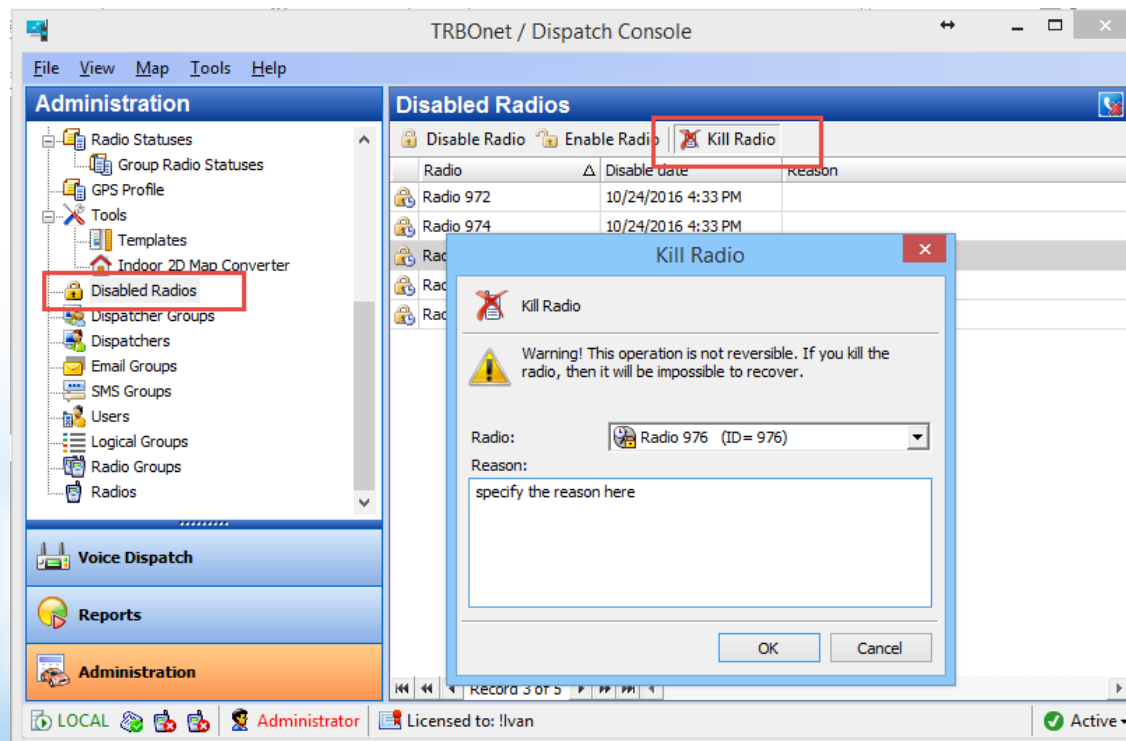
January 24, 2017



Radio Kill for CapMax 2.7

Allows the dispatcher to kill a radio. The killed radio is not operable, and can be recovered by Motorola only.

- Users with the admin rights only
- Suspended Radio Kill



Status Messages for CapMax 2.7

- Up to 250 status messages
- Very short commands (60ms)
- Sent over Control Channel
- How to use: Request to Talk,

Alarm Management, User Activity etc

Voice Dispatch Jon Morgan

General | Logical Groups | Additional | SIP Call

Callsign: Jon Morgan

Radio ID: 100 MDC / Sel-5 (Hex): 0

Radio Groups: All

Use icon: Portable Radios

GPS Source: Built-in GPS receiver

GPS Profile: Indoor

GPS Enabled

Telemetry Service

TLM Source: Built-in Telemetry

TLM Profile: (Default)

Text Messages Service

TMS Source: Built-in Text Messages

Radio Status Service

RS Profile: Default

[Hide Advanced Settings](#)

OK Cancel

Default

Profile Name: Default

Receive Send

Status	Name
0	On Duty
1	Busy
2	Available
3	On Site
4	Need Help
5	Request To Talk

Description

Status: 0

Name: On Duty

Severity: Information

Display as subscriber state

Apply

Add Remove

OK Cancel

Set Categories

Configuration: SU

Device Information: 871TQVE643

- General
- Job Tickets
- Systems
- Encoder
- Decoder
- Contacts
- RX Group Lists
- Capacity Max Features
 - Capacity Max Systems
 - Capacity Max Radio Wide Features: Capacity
 - Capacity Max Site Selection: v2.7_Load5_All
 - Capacity Max Emergency Systems
 - Capacity Max Status List*
 - MyStatuses-SU(1)
 - Zone/Channel Assignment

Capacity Max Status List Items

ID	Status
0	On Duty
1	Busy
2	Available
3	On site

4 items found (0 currently selected).

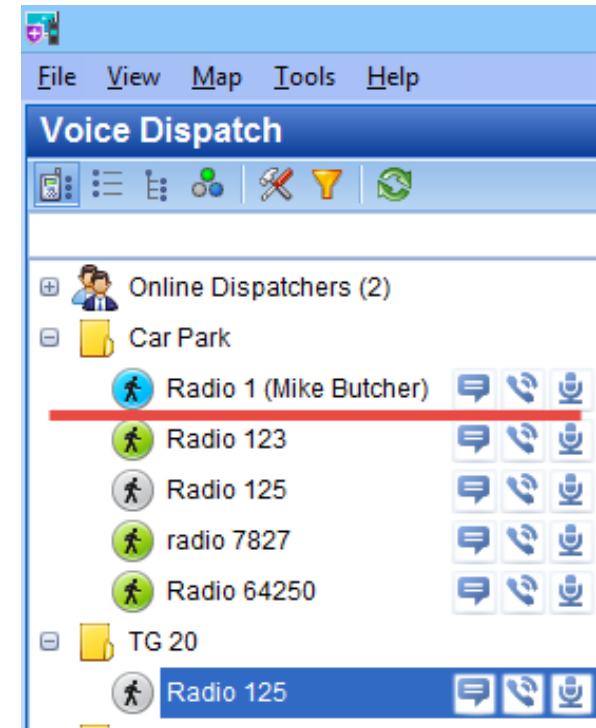
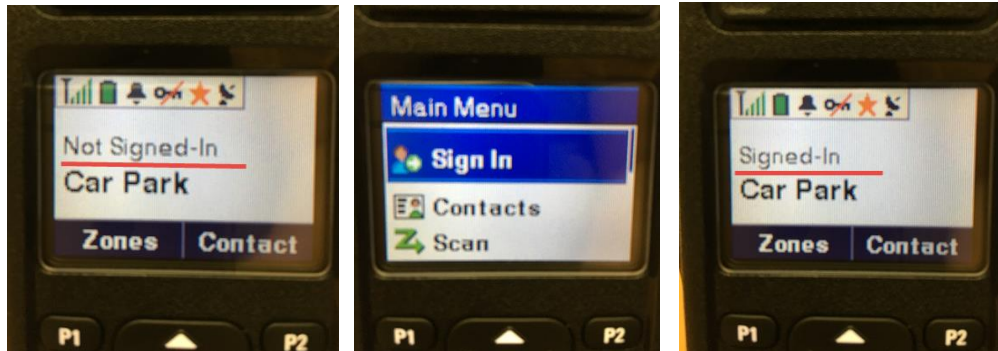
Sign IN / Sign OUT

Designed for shift workers where a radio can be used by multiple people. Shows name of worker instead of Radio ID.

New: Forced Sign-In

A radio user must sign-in within a specific time.

As soon as a radio switched on, TRBOnet sends voice/text reminders asking a user to sign-in. If a user does not sign-in, the TRBOnet sends Radio Disable command.

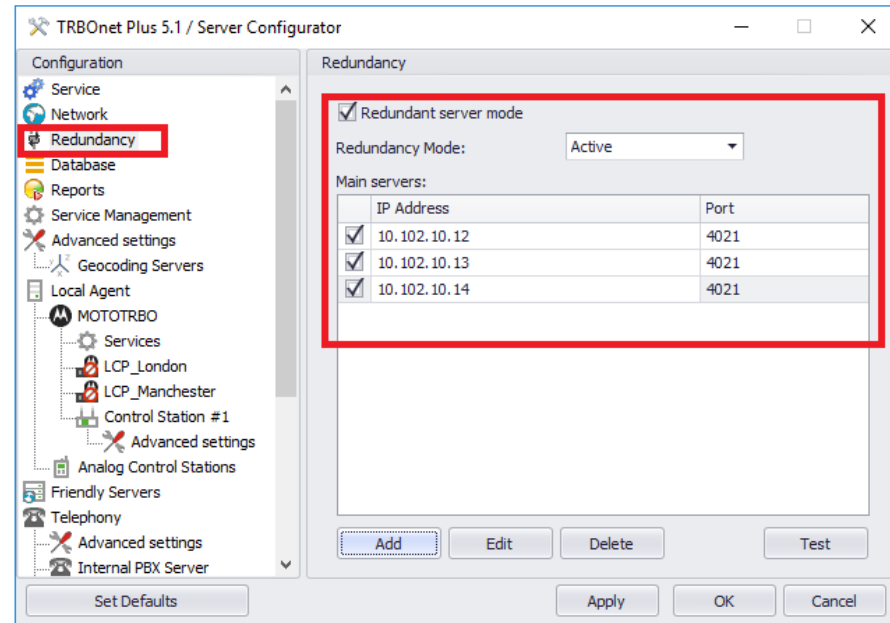


Redundancy Update

- Full support for Capacity Max 2.7 redundancy
- All infrastructure components can be redundant
 - Server, Data Gateway, VRC, Trunking Controller, Swift Agent

Supported Topologies:

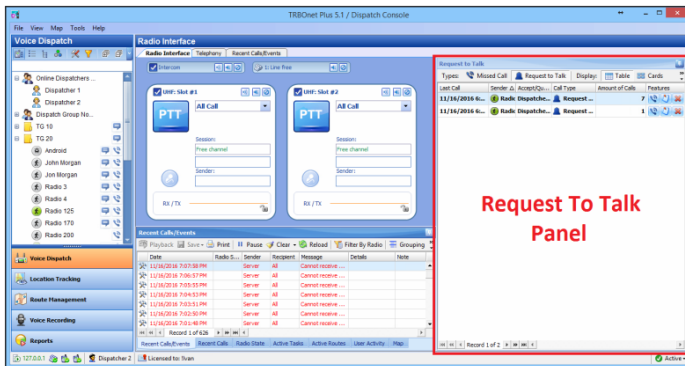
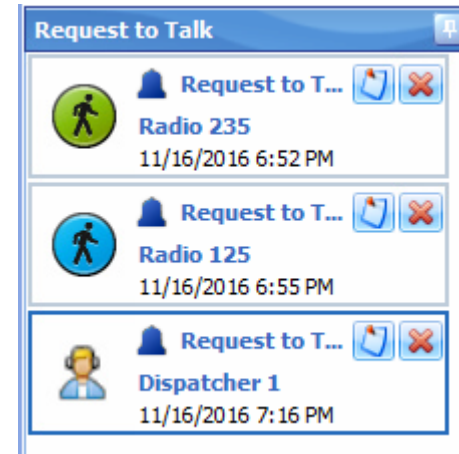
- Single Server on Failover Cluster
- N+1 Redundancy
- Multi Server installation



Request To Talk (RTT)

A radio user sends RTT to Dispatcher or Group or Dispatchers using Call Alert, DTMF, Telemetry, TEXT or Status Messages. RTT appears on a dispatcher PC as PopUp message with audible alert, thus dispatcher will not miss RTT even if all talk groups are muted. Dispatcher can Accept, Reject or Queue RTT.

- RTT to Dispatcher or Dispatch Group
- Radio, Phone and Intercom Calls
- Group and Individual response Call
- Card and Table View for RTT



Last Call	Sender	Accept/Queue	Call Type	Amount of Calls	Features
11/16/2016 6:55 PM	Radio 125	Dispatcher 1	Request to Talk	7	
11/16/2016 6:52 PM	Radio 235	Dispatcher 2	Request to Talk	1	

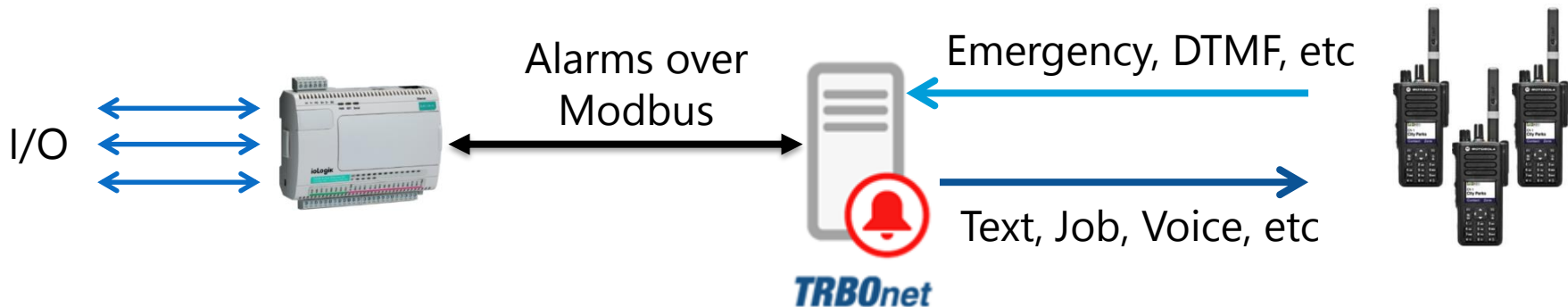
Alarm Management Update

Support for Modbus:

TRBOnet fully supports Modbus protocol. TRBOnet Server can work as Modbus Master or Slave.

READ: Alarm from Modbus device (RTU) can initiate an action (e.g., voice/text message to radios)

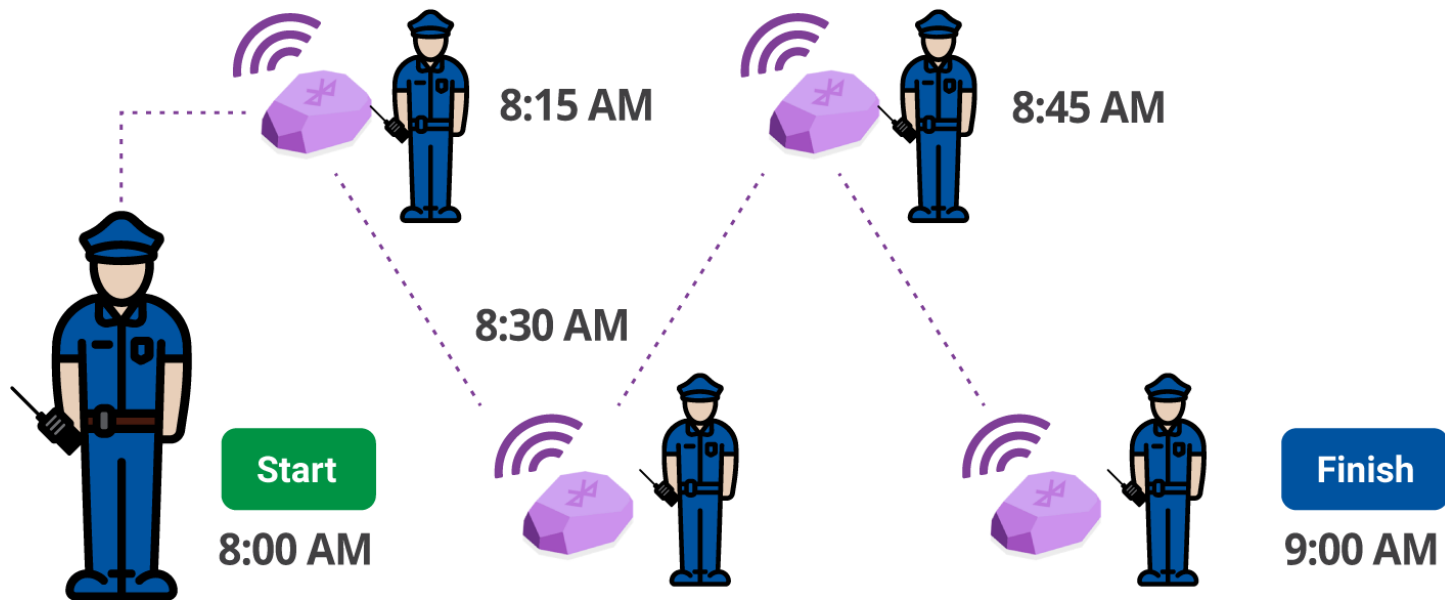
WRITE: in case of radio alarm TRBOnet sends command to Modbus device (RTU)



Guard Tour

Based on Indoor Positioning, this feature allows creating scheduled patrol tours and assigning guards to these routes. It ensures that the personnel attends all checkpoints in the specified order and within the predefined time intervals.

- Bluetooth Indoor Positioning (e.g. iBeacons)
- Can be combined with real-time tracking and location on emergency (i.e. ManDown)



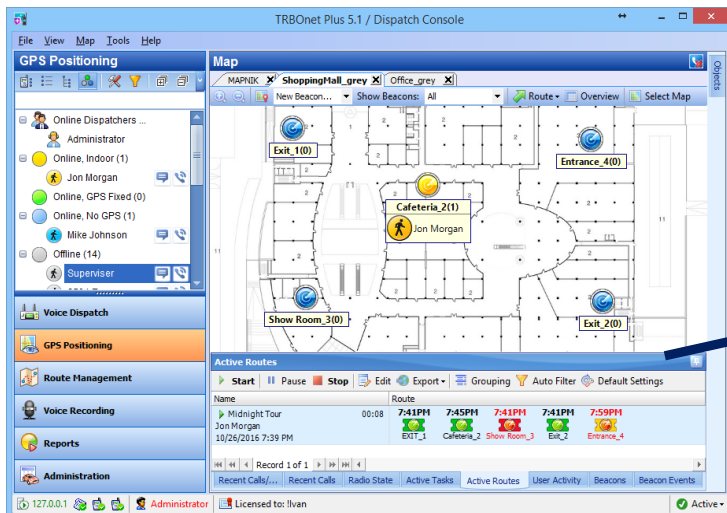
Guard Tour

Guard Tour Modes:

- Strict schedule (each checkpoint must be attended within a specific time range)
- Loose schedule (time ranges for checkpoints are not specified)

Monitoring Checkpoint Statuses Set Automatically

- When the guard tour starts, the Active Routes pane displays all checkpoints with the Waiting status (grey). Then all attended checkpoints automatically change their statuses to Attended (green) or, if a checkpoint is attended with emergency, to Alarm (red).



Name	Route					
▶ Midnight Tour	01:48	7:41PM	7:45PM	7:41PM	7:41PM	7:59PM
Jon Morgan						
10/26/2016 7:39 PM		EXIT_1	Cafeteria_2	Show Room_3	Exit_2	Entrance_4

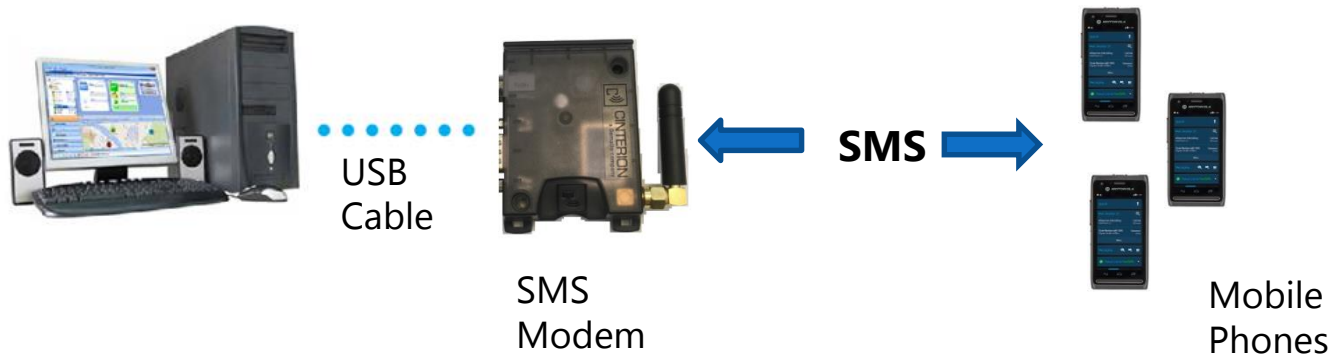
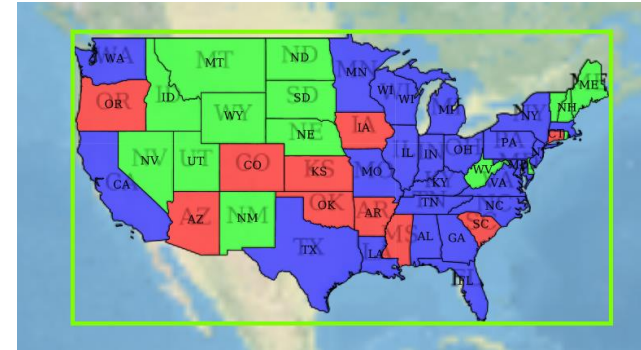
Multiple Audio Devices

Selected / Unselected channels as well as particular Talk Groups can be assigned to specific audio devices



Other Features

- Custom Icons for Subscribers
- Phone Interconnect Update
 - Remote Monitor for an Individual Radio
 - Remote Monitor for a Talk Group
- Support for Web Map Tile Service (layers)
- Support for GSM AT Modem / SMS (e.g., Gemalto BGS2T-232)



SWIFT Gateway A200: New Generation



Available Now

- Replacement for A002 gateway
- New form factor
- Wireless and **Wireline** (USB-cable) connection to a donor radio
- Display (state, IP address etc.)

New Mic Connector

- Provides high quality audio-in
- Allows to use standard Motorola desk mic and hand mic
- Sound card inside
- Voice goes to PC via USB cable. No static noise



Mobile Client for iOS

TRBOnet Mobile is an application for iOS devices that extends MOTOTRBO to tablets and smartphones. It works like a normal radio and delivers the most important information to the user device.



Available Now



TRBOnet
Digital Technologies



Thank You



www.TRBO.net.com

